

Automated Cell Evaluation for Single-Cell RNA-seq Analysis

INTRODUCTION

Single-cell sequencing allows researchers to characterize abnormal cell populations, discover and analyze rare cells, cellular map networks, and discover subtle, yet important, heterogeneities. Given the incredible potential, it is not a surprise that single-cell sequencing technology is seeing explosive growth and demand^{1,2}. Harnessing the power of single-cell sequencing, however, requires significant investment in cost and time. To ensure that the investment in time and resources is rewarded with quality data, the quality of the sample, prior to processing, is critical. Further, because all single-cell sequencing protocols rely on accurately quantifying cells before processing, accurate cell counts are a vital first step.

Therefore, an automated cell counter used to quantify single-cell sequencing samples must accurately and reliably count cells of all sample types, including dissociated tissues, separated nuclei, whole blood, and cultured cell lines. Here, we demonstrate how the LUNA-FX7™ Automated Cell Counter provides not only accurate counts for many diverse sample types but also just as importantly, verification of sample quality.

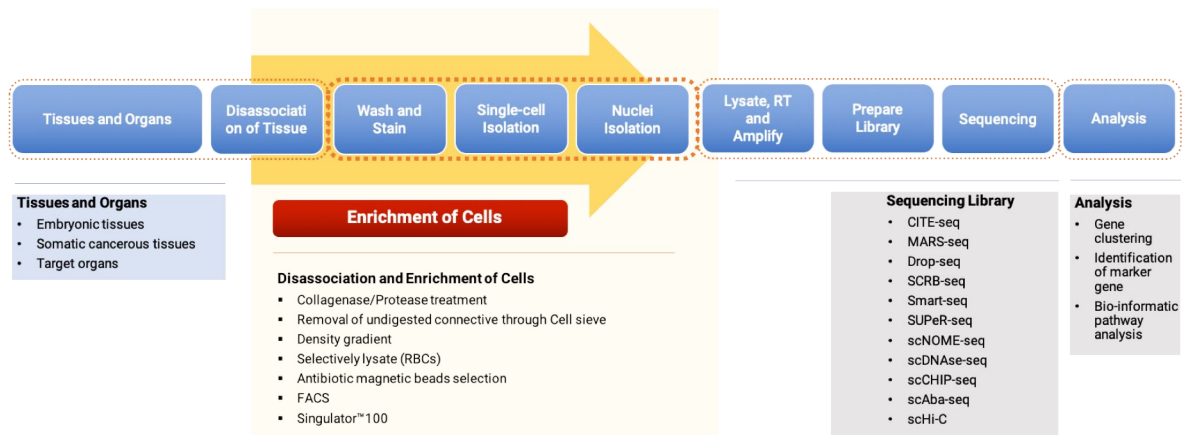


Figure 1. Single-cell sequencing workflow: 1) Tissue Collection, 2) Isolated Cell Preparation, 3) Sequencing Library Preparation, 4) Sequencing and 5) Analysis.

IMPORTANT

Generating isolated cells from whole tissues suitable for both counting and single-cell sequencing requires complete dissociation. Cell clusters can not only yield inaccurate counts but negatively influence sequencing results. The composition of the extracellular matrix (ECM) of each tissue type can vary, thus, the enzymatic and chemical composition of the dissociation methods must be optimized accordingly to ensure dissociated tissue to obtain isolated cells.

Cell Sample Quality Assessment

Initially, two cell samples were collected for single-cell RNA-seq analysis. Both samples were counted using standard cell viability protocol with the Acridian Orange/ Propidium Iodide cell staining dye (Cat# F23001). The first sample, B cells isolated from human peripheral blood, a high degree of viability and single-cell separation (Figure 2) suitable for downstream library preparation. By contrast, the second sample, adherent AsPC-1 cells, provides an example of how an accurate image-based counter is vital to assessing the quantity and quality of the sample preparation.

After harvesting, the AsPC-1 cells were subject to an incomplete dissociation. The resulting image clearly shows that a significant portion of the cell content is still incorporated into bound clusters as much as 9%, and the AsPC-1 viability was only 56%. Subject to the viability and cell separation, this sample is not suitable for downstream processing (Figure 3). In many cases, the sample cells for single cells are limited and require low cell concentrations and replications of count for the best and rapid cell counting. In the accurate count of low cell concentration, we use the LUNA™ 1-Channel Slide (Cat# L72011), which holds a larger cell volume to count even the cell concentration is low to 1.00E+04 cells/mL (Table 1).

Analyzing Intact Nuclei

For several single-cell sequencing applications, isolated cells need to be further processed to generate separated and intact nuclei. We next evaluated the utility of the LUNA-FX7™ to assess the overall quality and quantity of the fully separated nuclei. For this, we used 3 cell lines - HL60, HeLa cells, and HEK cells. Figure 4 shows 3-panel images containing intact, healthy HL60 cells (left), HL60 cells with the nuclei partially isolated (middle), and the nucleic completely separated (right), and the live cells with intact cell membranes appear green fluorescence by Acridian Orange staining. In contrast, both dead cells and isolated nuclei turn red fluorescence by Propidium Iodide uptaken through broken or absent cell membranes. However, the LUNA-FX7™ allows you to distinguish intact dead cells vs. intact nuclei using the cell size information (Figure 4, Figure 6). For example, average cell size of intact live HL-60 was measured as 13.4 μm , and the average size of the completely isolated nuclei was measured as 8.3 μm , indicating cell membrane and plasma part was successfully removed. Incompletely isolated nuclei size was measured as 10.2 μm in average indicating the quality of isolated nuclei is not good enough for downstream processing (Figure 4).

Also, high resolution brightfield images of the LUNA-FX7™ can be used to visually verify the quality of isolated nuclei. The isolated nuclei, for instance, can be easily distinguished from intact cells because the borders of nuclei are thinner and not evident due to the lack of the cell membrane. (Figure 5, and Figure 6).

In summary, the LUNA-FX7's capabilities and sensitivity in three-channel imaging (BF, GF, and RF), along with a sophisticated tagging algorithm, allow you to establish quality control criteria for sample pass or fail before committing expensive downstream processing.

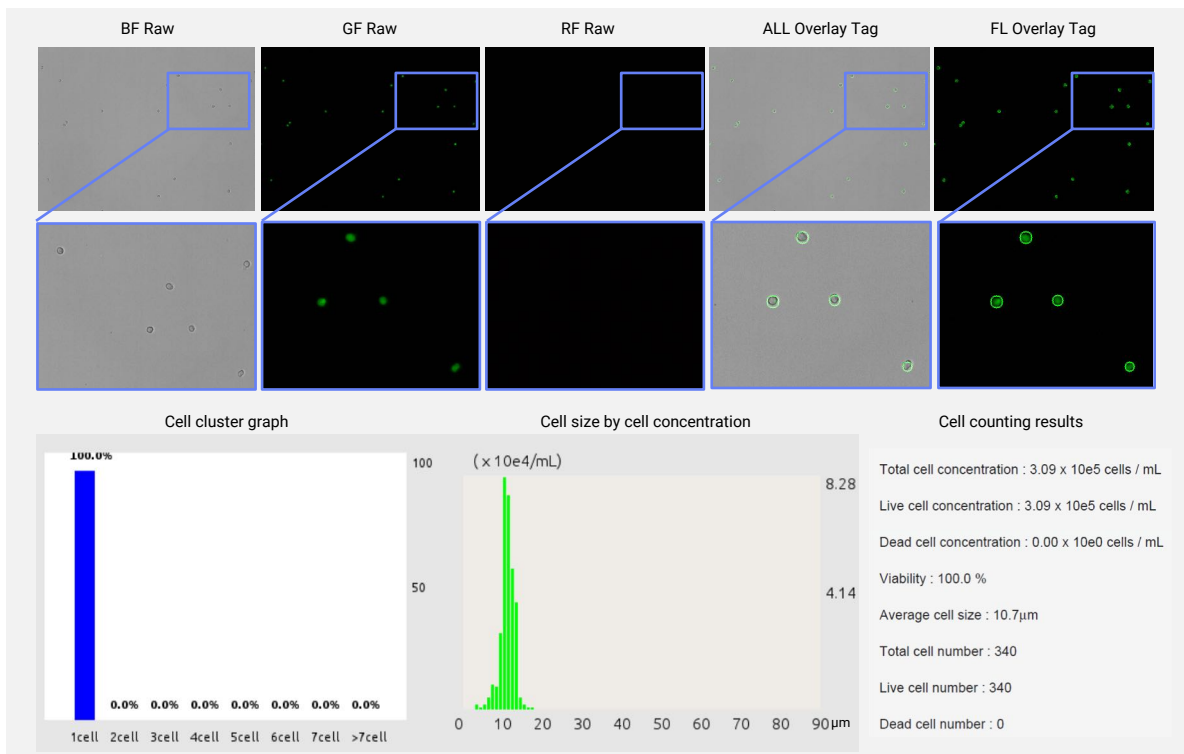


Figure 2. The B cells appeared well prepared for the single-cell library, including all positive green cells without dead cells (RF) or debris of particles (BF) with an excellent tag of 100% viability. These healthy cells demonstrated an average cell size of $10.7 \mu\text{m}$, 100% single-cell separation in the cell cluster plot at a concentration of $3.00\text{E}+05$ cells/mL as cell counting

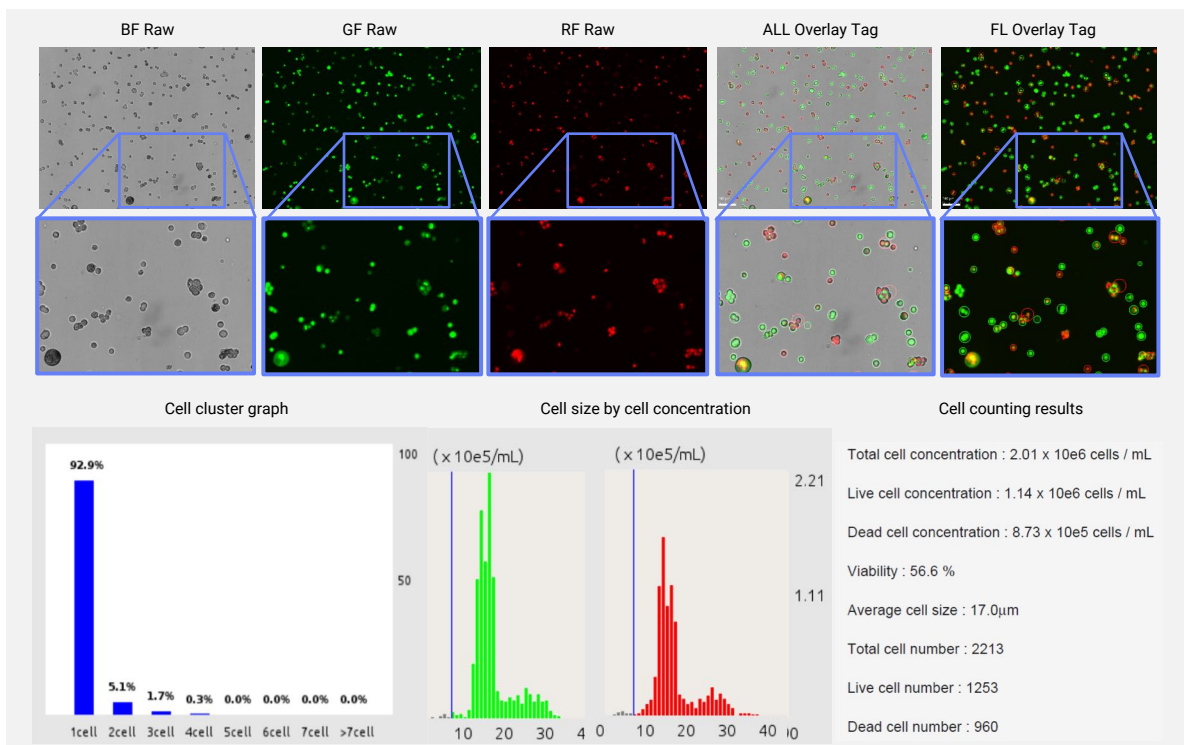
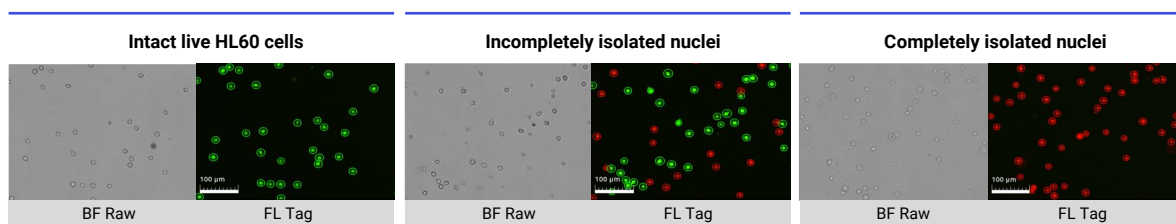


Figure 3. Example of inadequately prepped cell sample for single-cell sequencing. The AsPC-1 cells of inadequate cell profiles for single-cell sequences have been described. 'Failing' cell preps show both a high content of dead cells and contain incompletely dissociated clusters of cells. The cluster histogram feature of the LUNA-FX7™ allows the accurate assessment of cell cluster percentages vs. isolated cells.



Cell count	Intact live cells	Incompletely isolated	Completely isolated nuclei	Nuclei count
Total cells	$1.27 \times 10^6/\text{mL}$	$2.81 \times 10^6/\text{mL}$	$1.96 \times 10^6/\text{mL}$	Total cells
Live cells	$1.16 \times 10^6/\text{mL}$	$1.56 \times 10^6/\text{mL}$	$0.00 \times 10^0/\text{mL}$	Intact cells
Dead cells	$1.10 \times 10^5/\text{mL}$	$1.24 \times 10^5/\text{mL}$	$1.96 \times 10^6/\text{mL}$	Isolated nuclei
Viability	91.3%	55.07%	0.00%	cell quota
Ave. cell size	13.4 µm	10.2 µm	8.3 µm	Ave. object size

Figure 4. Possible results from nuclei isolation processes of HL 60 cells. Brightfield (BF) images and overlaid fluorescence images with tag allow you to distinguish the different cell 'states easily'. Intact cells appear noticeably more prominent and darker than the isolated nuclei in BF images. At the same time, the fluorescent images and counts allow accurate quantitative assessment.

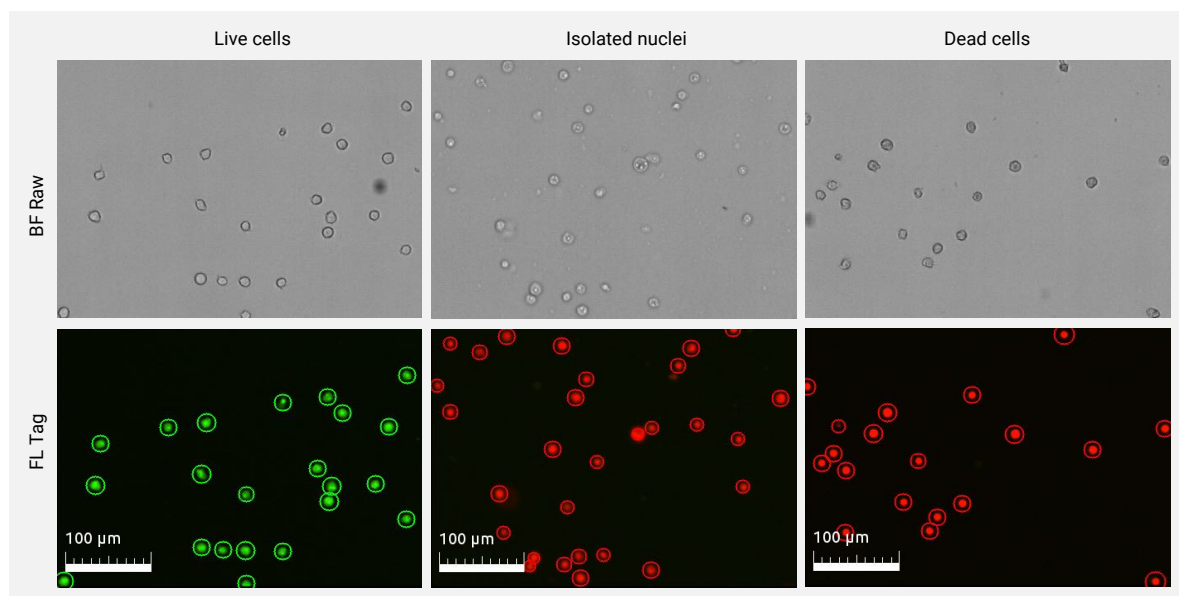
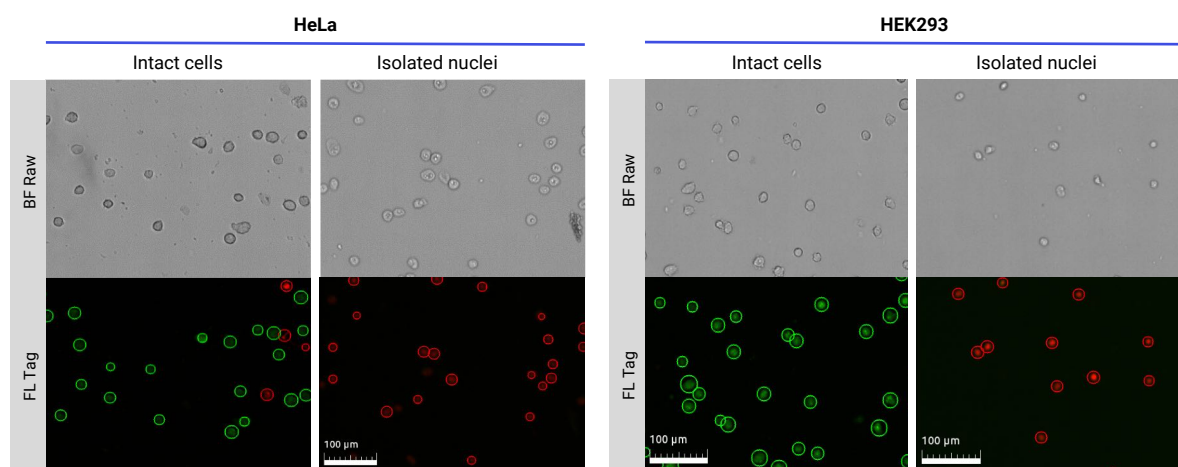


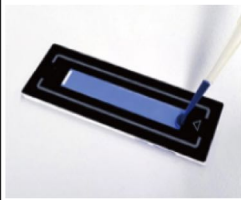



Figure 5. Differentiation between live, dead, and intact nuclei. Because both dead cells and intact nuclei lack an intact cell membrane, the red fluorescent would be perceived from propidium iodide staining. However, the BF images and size measurements generated by the LUNA-FX7™ enable the routinely distinguish between dead cells and intact, isolated nuclei.



	HeLa		HEK293	
	Intact cell	Isolated nuclei	Intact cell	Isolated nuclei
Total cells	$1.27 \times 10^6/\text{mL}$	$1.80 \times 10^6/\text{mL}$	$2.66 \times 10^6/\text{mL}$	$3.91 \times 10^5/\text{mL}$
Intact live cells	$1.16 \times 10^6/\text{mL}$	$0.00 \times 10^0/\text{mL}$	$2.56 \times 10^6/\text{mL}$	$9.05 \times 10^3/\text{mL}$
Isolated nuclei	$1.10 \times 10^5/\text{mL}$	$1.80 \times 10^6/\text{mL}$	$9.59 \times 10^4/\text{mL}$	$3.82 \times 10^5/\text{mL}$
Intact cell	91.3%	0.00%	96.4%	2.3%
Ave. object size	13.4 μm	6.4 μm	13.3 μm	11.7 μm

Figure 6. Evaluation of isolated nuclei and possible results. Brightfield (BF) images and overlaid fluorescence images allow you to distinguish the different cell 'states easily'. Intact cells appear noticeably more prominent and darker borders than the isolated nuclei in BF images. At the same time, the fluorescent images and counts allow accurate quantitative assessment. Live intact cells are stained with acridine orange (GF), and separated nuclei are stained red. The LUNA-FX7™ can accurately discriminate from samples with large cytoplasm and small nuclei (HeLa) and cell types with large nuclei relative to the cytoplasm (HEK293).

Table 1. The counting slide options and their specifications.

Compatible slides	LUNA™ 1-Channel Slides	PhotonSlide™	LUNA™ 3-Channel Slides	LUNA™ 8-Channel Slides
Sample throughput	1 sample	Up to 2 samples	Up to 3 samples	Up to 8 samples
Sample loading volume	50 μL	10 $\mu\text{L}/\text{chamber}$	10 $\mu\text{L}/\text{chamber}$	10 $\mu\text{L}/\text{chamber}$
Analysis volume	5.1 μL	1.3 $\mu\text{L}/\text{chamber}$	1.3 $\mu\text{L}/\text{chamber}$	0.5 $\mu\text{L}/\text{chamber}$
Number of image fields	47 fields	12 fields/chamber	12 fields/chamber	5 fields/chamber
Counting concentration	$1.00\text{E}+04$ - $2.00\text{E}+07/\text{mL}$	$5.00\text{E}+04$ - $1.30\text{E}+07/\text{mL}$	$5.00\text{E}+04$ - $1.30\text{E}+07/\text{mL}$	$1.00\text{E}+05$ - $1.30\text{E}+07/\text{mL}$
Image				
Specialty	Larger volume to effectively enumerate in the extreme cases of the low concentration of cells	Comfortable and familiar to use for cell counting, just like using a hemocytometer	Additional statistical report available from triple replicates of mean, SD and CV	Eight samples at once in a high-throughput manner Compatible with multichannel pipettes

CONCLUSION

For single-cell sequencing, the LUNA-FX7™ provides insight for researchers exploring to improve cell sample accuracy and reliability to assess both the quantity and quality of cells and isolated nuclei samples in a wide range of sample types.

REFERENCES

¹ L., Xiong, F., Wang, Y., Zhang, S., Gong, Z., Li, X., . . . Guo, C. (2021). What are the applications of single-cell RNA sequencing in cancer research: a systematic review. *J Exp Clin Cancer Res*, 40(1), 163. doi:10.1186/s13046-021-01955-1

² Dong, X., Liu, C., & Dozmorov, M. (2021). Review of multi-omics data resources and integrative analysis for human brain disorders. *Brief Funct Genomics*. doi:10.1093/bfpg/elab024